

**groov**▶▶**e**

# **Power Bank 5000**



## **User Manual**

*Magnetic Portable  
Charger*

**GV-CH5000M**



## **30 Day Right To Return**

*We do not envisage any problems occurring with your groov-e GV-CH5000M Power Bank. However, for your peace of mind, should any fault occur, please return it within 30 days to your retailer with proof of purchase for an exchange or refund.*



## **12 Month Guarantee**

*This product is guaranteed for twelve months. Please retain your receipt as this will be required as proof of purchase in the event that the device does not perform as expected then please contact your original point of purchase, should you require further assistance then please contact us.*



## **Extended Warranty**

*Please register your product within 30 days from date of purchase [www.groov-e.co.uk/warranty](http://www.groov-e.co.uk/warranty). Proof of purchase required.*



## **Contact Us**

*Reach out to us at [info@groov-e.co.uk](mailto:info@groov-e.co.uk) or visit [www.groov-e.co.uk](http://www.groov-e.co.uk)*

*“Congratulations on your purchase and Thank You for choosing the groov-e GV-CH5000M Power Bank. Please read the user guide carefully before using”.*

### **Important safety information**

- 1)** The device is not a toy. Keep it out of the reach of children and pets.
- 2)** Protect the product from extreme temperatures, direct sunlight, strong jolts, high humidity, moisture, flammable gasses, vapours and solvents.
- 3)** Please handle the product carefully, jolts, impacts or a fall even from a low height can damage the product.
- 4)** Never pour any liquids over the electrical devices or put objects filled with liquid right next to the device.
- 5)** Never leave the product unattended during use.
- 6)** The device warms up during operation. Ensure that there is sufficient ventilation. The device must not be covered.
- 7)** Do not open the products sealed plastic case. The rechargeable battery is permanently built into the product and cannot be replaced.
- 8)** Charge the battery regularly (at least once every 3 months), even if you are not using the device. Due to the device technology being used, you do not need to discharge the battery first.
- 9)** When charging, place the product on a surface that is not heat sensitive. it is normal that a certain amount of heat is generated during charging.
- 10)** Do not put any foreign objects into the input/output ports. This could cause a short circuit and damage to the device.
- 11)** During cleaning or operation, never immerse electrical parts of the product in water or expose the product to rain or moisture so as not to damage the circuits. Clean the exterior with a dampened cloth and dry thoroughly

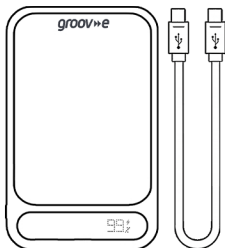
**Note: This product is designed for wireless charging of mobile devices as well as mobile devices charged via a USB Type-C cable. We assume no liability for damages to the product, for property damage or for personal injury due to careless or improper usage of the product, or usage of the product which does not meet the manufacturer's specified purpose.**

**Improper use can activate the built-in circuit protection causing the power bank to shut down. To reset simply charge the power bank.**

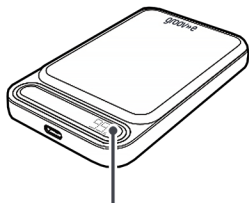
## OVERVIEW

### **In the box:**

- 1 x GV-CH5000M**
- 1 x USB-C Cable**
- 1 x User manual**

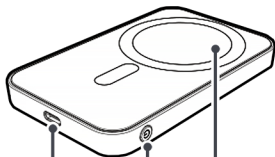


### FRONT



**LCD Battery  
Level Indicator**

### BACK



**USB-C  
Input/Output**

**Power  
Button**

**Wireless  
Charging  
Area**

### **Power On/Off**

**If using a cable for charging (not wireless charging):**

- 1. Single press button to turn on the power bank**
- 2. Double click the button to turn off the power bank**

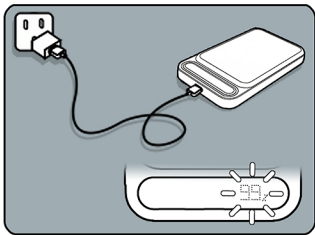
### **For magnetic charging:**

The unit will automatically switch on when you wirelessly connect your device to the powerbank. If it does not, please single press the button to turn the power bank on.

## OPERATION

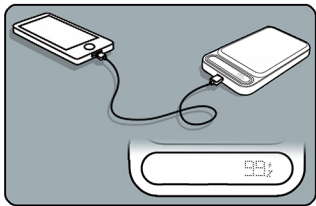
### Charging the Power Bank

1. Insert the supplied USB-C charging cable connector into the USB-C Port on the GV-CH5000M Power Bank.
2. Insert the USB-C Connector on the other end of the charging cable into a suitable power adapter for USB charging (not supplied).
3. The LCD power indicator flashes when charging the power bank. When fully charged the LCD will display 100%.
4. Remove the charging cable once fully charged.



### Charging a Device via USB

1. Ensure the output of the device you are charging is 5V/9V/12V.
2. Insert the USB USB-C charging cable connector into the USB USB-C port on the GV-CH5000M.
3. Insert the other end of the USB USB-C Charging cable into the charging port on your device.
4. Ensure that the charging cable is securely connected to both the device and the power bank.
5. Your device will commence charging. The LCD power indicator will show the ⚡ charging symbol when wired charging. The remaining percentage of battery level in the power bar is displayed on the LCD screen.
6. When your mobile device is fully charged, the power bank will automatically turn off. Remove the charging cable from your device and the power bank once fully charged.



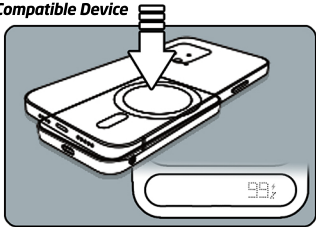
## OPERATION

### **Charging a MagSafe® / Magnetic Compatible Device**

1. Ensure the device you wish to charge supports MagSafe / Wireless charging.
2. Place your mobile device onto the wireless charging area.
3. The GV-CH5000M recognizes that a device is on the charging area.
4. Your device will commence charging. The LCD power indicator will show the ⚡ charging symbol when wireless charging.

The remaining percentage of battery level in the power bar is displayed on the LCD screen.

5. When your mobile device is fully charged, the power bank will automatically turn off. Remove your device from the power bank once fully charged.



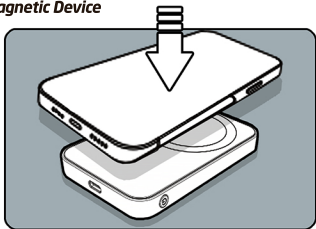
**Note: Do not place any sensitive objects, such as bank cards or credit cards, memory cards, watches, etc. on or near the power bank, as they may be damaged by the induction panel.**

**Do not charge and discharge the power bank at the same time.**

### **Charging a Non Magsafe® / Non Magnetic Device**

1. Place the power bank on a flat surface.
2. Place your mobile device onto the wireless charging area.
3. The GV-CH5000M recognizes that a device is on the charging area.
4. Your device will start charging.

**Note:** your device will not be magnetically attached to the power bank and charging may be slower.



MagSafe is a trademark of Apple Inc., registered in the USA and other countries

## **TROUBLESHOOTING**

### **Power Bank not working?**

- *Is the USB cable functioning correctly and connected?*
- *Is the power bank turned on?*
- *Is there enough battery left in the power bank?*
- *Is your device compatible with the power bank's 5V/9V/12V output?*

### **Why is the Power Bank charging, then stopping & restarting?**

- *Because the charging current may be excessive and the over current protection function has been activated. To reset the power bank, simply recharge it.*

### **Why is the Power Bank not charging my device?**

- *The power bank is only compatible with 5V input devices, check the input on your device.*

## SPECIFICATIONS

**Capacity:** 50000mAh

**Battery Type:** Lithium Polymer

**LCD Power Level Display**

**USB-C Input:** 5V/3A, 9V/2A, 12V/1.5V (18W)

**Output:** USB-C 5V/3A, 9V/2.22A,  
12V/1.5A (20W)

**Magnetic Wireless:\*\* 5W/7.5W/10W/15W**

**USB-C Charging Cable (included)**

**Recharge Time:** 1 Hour

**Device Charging Time:\*** 1.5-3 Hours

\*time based on charging smartphones

\*\*your device must support magnetic  
wireless charging

**WHAT YOU CAN CHARGE**

**Smartphone:** 1-2 times\*

**Tablet:** 1 times\*

**GPS:** 1-2 times\*

**Mobile Phone:** 2-3 times\*

**e-Reader:** 1-2 times\*

**MP3 Player:** 2-3 times\*

\*based on average times



Pre-Charged  
& ready  
to use



Wireless  
Charging



Fast  
Charge



Compatible  
with  
MagSafe

## BATTERY DISPOSAL

*This product contains batteries and should not be treated as normal household waste and should be recycled. Please take it to your nearest collection facility or for further details contact your local council or visit [www.recycle-more.co.uk](http://www.recycle-more.co.uk)*

*Batteries contain substances that may be harmful to the environment and human health. Keep out of the reach of children and seek immediate medical help if swallowed.*

*Never throw batteries into a fire or attempt to open the outer casing.*

*Should your product develop a fault please visit our website at [www.groov-e.co.uk](http://www.groov-e.co.uk)*

### Environment Protection

*Waste electrical products should not be disposed of with household waste.*

*Please recycle where facilities exist.*

*Check with your Local Authority or retailer for recycling advice.*





## **GUARANTEE**

**Subject to the conditions stated below, Groov-e guarantees this equipment against defects in workmanship or materials of its mechanical and electronic component parts (excluding styling, battery cells, magnetic tapes, re-chargeable batteries, user removable memory devices, with the exception where the battery is inbuilt into the product) for a period of one year from the date of purchase. This product will be repaired or if necessary replaced free of charge if it has been proven to be defective within the one year warranty period.**

- 1)** Claims under this guarantee should be made through the authorised dealer/retailer from whom the equipment was purchased. If this is not possible, please contact Groov-e directly.
- 2)** This guarantee is only valid when the equipment is purchased and retained within the United Kingdom and a valid proof of purchase has been provided.
- 3) This Guarantee Excludes:**
  - (i)** All damage caused through accident, misuse, wear and tear, neglect, installation and/or use in a manner inconsistent with technical and safety standards.
  - (ii)** Alterations or adjustments made to equipment
  - (iii)** Loss of data resultant from malfunction of hard drive or other storage device
  - (iv)** Damage caused to any third party device as a result of using the product.
- 4) No liability under this guarantee shall be incurred:**
  - (i)** In respect of damage or loss occurring during transit to or from the purchaser
  - (ii)** Where the serial number plate of the equipment has been removed or altered in any way.
- 5)** Groov-e shall not be liable for consequential damage, loss or injury arising from or in connection with the equipment, excepting only that nothing in this condition shall or shall be construed so as to exclude or restrict liability for negligence.
- 6)** The cost of carriage to and from Groov-e shall be borne by the purchaser.
- 7)** This guarantee is personal to the original purchaser and is not transferable.
- 8)** If the equipment, in respect of which a claim hereunder is made, is found on examination to comply with the published specifications, a test fee may be incurred.

***This guarantee is in addition to and does not in any way affect any statutory or other right of consumer purchasers, including those rights in relation to sections 13 to 15 of the Sale of Goods Act 1979, the Sale and Supply of Goods to Consumer Regulations 2002, The Consumer Rights Act 2015 or the Sale of Goods and Supply of Services Act 1980 (for ROI).***

## **DECLARATION OF CONFORMANCE**

*Groov-e hereby declares that this product is in compliance with the essential requirements and other relevant provisions of the Radio Equipment Directive 2014/53/EU. The complete declaration of conformity can be requested from us at:*

**groov»e**

**Unit J  
Braintree Industrial Estate  
Braintree Road  
Ruislip  
Middlesex  
HA4 0EJ UK**

### **Authorised EU Representative**

*Rashmian EU Ltd  
Robwyn House  
Suite 3E  
Corrintra  
Castleblayney  
Co. Monaghan  
Ireland*

**[www.groov-e.co.uk](http://www.groov-e.co.uk)**

**Email: [info@groov-e.co.uk](mailto:info@groov-e.co.uk)**

**Telephone: 020 8839 0978**

*Register your purchase for extended warranty*  
**[www.groov-e.co.uk/warranty](http://www.groov-e.co.uk/warranty)**