

groov▶▶e

GV-TW10

**Ultra
Buds**



Easy Start Up Guide

Active Noise Cancelling
True Wireless
Earbuds

 **Bluetooth®**

groov-e.co.uk



30 Day Right To Return

We do not envisage any problems occurring with your groov-e GV-TW10 Ultra Buds Active Noise Cancelling True Wireless Earbuds. However, for your peace of mind, should any fault occur, please return it within 30 days to your retailer with your proof of purchase for an exchange or refund.



12 Month Guarantee

This product is guaranteed for twelve months. Please retain your receipt as this will be required as proof of purchase. In the event that the device does not perform as expected then please contact your original point of purchase, should you require further assistance then please contact us.



Extended Warranty

Please register your product within 30 days from date of purchase www.groov-e.co.uk/warranty. Proof of purchase required.



Contact Us

Reach out to us at info@groov-e.co.uk or visit www.groov-e.co.uk

PRODUCT OVERVIEW

Packaging Contents:

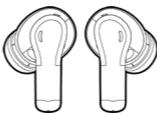
1. GV-Tw10 Earphones *1 pair
2. USB Type-C Charging Cable *1 piece
3. Spare silicone caps *2 pairs
4. Charging Case *1 piece
5. User manual *1 piece



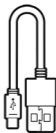
Charging Case X1



Ear Caps X2

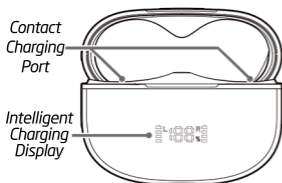
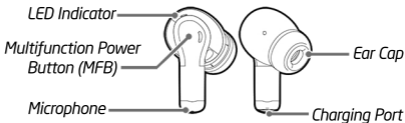


Bluetooth
Earphones X1

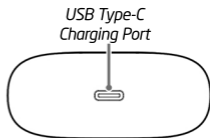


USB Type-C
Charging Cable X1

BRIEF INTRODUCTION



(FRONT)



(BASE)

"Congratulations on your purchase and **Thank You** for choosing the groov-e GV-TW10 Ultra Buds Active Noise Cancelling True Wireless Earbuds."



IMPORTANT SAFETY INFORMATION

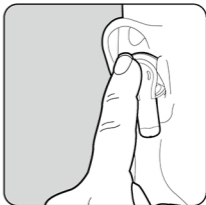
Please read this important information carefully before you use the GV-TW10 Ultra Buds Active Noise Cancelling True Wireless Earphones and save it for future reference.

- 1.** When not in use for a long period of time please turn off the Earphones and store carefully to avoid any damage.
- 2.** In order to prolong the battery life, please charge every 6 months
- 3.** Please charge the Earphones first if they have been left unused for a long time.
- 4.** The batteries in the Earphones and Charging case are original and please do not attempt to change them yourself.
- 5.** Please keep the Earphones and Charge Case in a dry place.
- 6.** Please keep away from high heat sources to avoid battery blast accidents.
- 7.** Do not play at high volumes for long periods at a time, to avoid potential hearing damage.
- 8.** Do not use the Earphones in a dangerous place or whilst driving.

There is a built-in rechargeable battery inside both Earphones and the charging case, which must not be disassembled. Ensure you have removed the blue charging port protectors from both earphones before the initial charge.

BASIC OPERATIONS

- 1.** To switch the Earphones on, open the charging case, then the earphones will turn on and pair with each other automatically.
- 2.** To switch the Earphones off, place the earphones into the charging case.
- 3.** Whilst receiving a phone call, short press the **MFB** to answer the call, and short press the **MFB** again to hang up. To reject an incoming call, long press the **MFB** for 2 seconds.
- 4.** If you wish to open voice assistant (Siri or Google) whilst in standby mode, hold the **MFB** on the left earphone for 3 seconds.
This will open your device's default assistant without having to retrieve or unlock it, which will then listen and respond to any voice command. Ensure that a voice assistant is installed on your device.
- 5.** To play/pause music, tap the **MFB** once.
To play next track (Right Earphone) quickly triple tap the **MFB**.
To turn Volume up (Right Earphone) quickly double tap the **MFB**.
To play previous track (Left Earphone) quickly triple tap the **MFB**.
To turn Volume down (Left Earphone) quickly double tap the **MFB**.

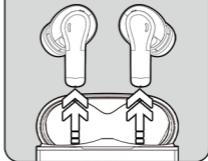


HOW TO PAIR

1. Open the charging case's cover to about 90 degrees, then the earphone will pair with each other automatically.



2. Then remove both Earphones vertically.



- 3.



Turn on the Bluetooth of your device and search for GV-TW10, then click to select and connect.

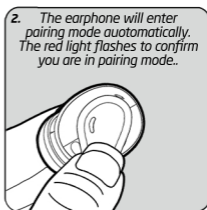
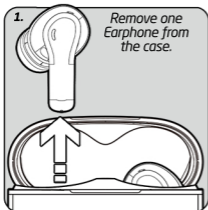
- 4.



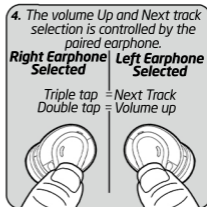
Providing your device/phone is switched on and within pairing distance your earphones will auto-connect to your device the next time you switch them on.

***Please be sure to fully charge the GV-TW10, when you are using them for the first time.**

HOW TO PAIR A SINGLE EARPHONE



Turn on the Bluetooth of your device and search for "GV-TW10", then click to select and connect.



Note: Whilst in Mono mode the volume down and previous track selection is controlled via your Bluetooth device

ENVIRONMENTAL NOISE CANCELLING (ENC/Transparency) & ACTIVE NOISE CANCELLING (ANC)

Turning ENC/Transparency / ANC ON/OFF

1. Remove the earphones from the charging case.
2. Long press the **MFB** on the right earphone for 2 seconds to enter **ENC (Transparency)** mode, long press the **MFB** on the right earphone for again 2 seconds to enter **ANC** mode.
3. To exit **ANC** mode long press the **MFB** on the right earphone again. The earphones will revert back to regular Bluetooth mode (ANC off).

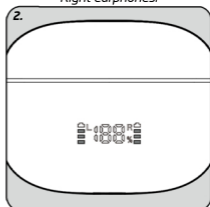
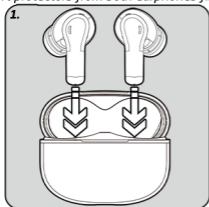
ENC (Transparency) Adapts to your surroundings, like wind or crowd noise. Allows important sounds through clearly, like phone calls and announcements. Voice clarity is enhanced by suppressing background noise.

ANC Blocks out all unwanted external sounds so you can focus on your music or calls. Improves the overall listening experience by providing immersive sound quality by reducing low frequency noise.

CHARGING THE EARPHONES

Place the earphones in their charging slots, ensuring you have removed the blue charging port protectors from both earphones first.

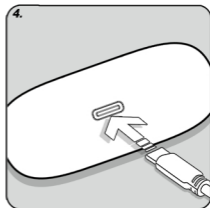
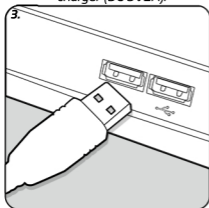
The battery indicator lights show the amount of charge in the Left & Right earphones.



CHARGING THE CASE

Connect the USB end of the charging cable to the USB port if a suitable charger (DC 5V1A).

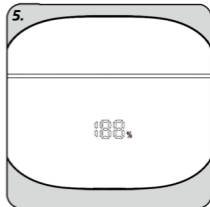
Then connect the other end to the charging case.



When the case is in the charging state, the display will flash show the increasing percentage of charge in the case.

When fully the display will show 100%. Unplug the charging case from the power supply once fully charged.

Note: When using the earphones the digital display will turn off. To check the battery level in the case or earphones insert the earphones back into the charging case. The percentage of charge will be displayed.



FEATURES

- Bluetooth connectivity
- True Wireless Stereo (TWS)
- Active Noise Cancellation (ANC)
- Environmental Noise Cancellation (ENC) with 4-mics
- Transparency mode
- Voice assistant enabled
- Touch control
- Up to 7 hours music playback - and up to an additional 21 hours using the charging case
- Music play/pause
- Volume & track control
- Clear sound with powerful bass
- Comfortable fit
- Ergonomic design
- Rechargeable battery
- Auto power on/off, Auto Pairing
- Built-in mic for hands-free calls
- Answer/Reject incoming calls
- Silicone earbud tips 3 sizes (included)
- Type-C USB charging cable (included)
- Portable intelligent charging case (included)

SPECIFICATIONS

Specifications (earphones):

Bluetooth version 5.4
Wireless range: 10M (open area)
Battery: 50mAh x 2
Music playing time up to 7 hours (1 charge)
Standby time: 200 hours

Specifications (charging case):

Case recharge capacity: 400mAh
Charging time for case: 2.5 hours
Digital display for battery charging



Active Noise Cancelling



Wireless Audio Playback



Clear Calls



Touch Control



Charging Case Included

Battery Removal/Disposal

This product contains batteries and should not be treated as normal household waste and should be recycled. Please take it to your nearest collection facility or for further details contact your local council or visit www.recycle-more.co.uk.

Batteries contain substances that may be harmful to the environment and human health. Keep out of the reach of children and seek immediate medical help if swallowed.

Never throw batteries into a fire or attempt to open the outer casing.

Should your product develop a fault and your battery needs replacing for further advice on how to safely remove your battery please visit our website at www.groov-e.co.uk

Environment Protection

Waste electrical products should not be disposed of with household waste. Please recycle where facilities exist. Check with your Local Authority or retailer for recycling advice.



GUARANTEE

Subject to the conditions stated below, groov-e guarantees this equipment against defects in workmanship or materials of its mechanical and electronic component parts (excluding styling, battery cells, magnetic tapes, re-chargeable batteries, user removable memory devices, with the exception where the battery is inbuilt into the product) for a period of one year from the date of purchase. This product will be repaired or if necessary replaced free of charge if it has been proven to be defective within the one year warranty period.

- 1) Claims under this guarantee should be made through the authorised dealer/retailer from whom the equipment was purchased. If this is not possible, please contact Groov-e directly.**
- 2) This guarantee is only valid when the equipment is purchased and retained within the United Kingdom and a valid proof of purchase has been provided.**
- 3) This Guarantee Excludes:**
 - (i) All damage caused through accident, misuse, wear and tear, neglect, installation and/or use in a manner inconsistent with technical and safety standards.**
 - (ii) Alterations or adjustments made to equipment**
 - (iii) Loss of data resultant from malfunction of hard drive or other storage device**
 - (iv) Damage caused to any third party device as a result of using the product.**
- 4) No liability under this guarantee shall be incurred:**
 - (i) In respect of damage or loss occurring during transit to or from the purchaser**
 - (ii) Where the serial number plate of the equipment has been removed or altered in any way.**
- 5) Groov-e shall not be liable for consequential damage, loss or injury arising from or in connection with the equipment, excepting only that nothing in this condition shall or shall be construed so as to exclude or restrict liability for negligence.**
- 6) The cost of carriage to and from Groov-e shall be borne by the purchaser.**
- 7) This guarantee is personal to the original purchaser and is not transferable.**
- 8) If the equipment, in respect of which a claim hereunder is made, is found on examination to comply with the published specifications, a test fee may be incurred.**

This guarantee is in addition to and does not in any way affect any statutory or other right of consumer purchasers, including those rights in relation to sections 13 to 15 of the Sale of Goods Act 1979, the Sale and Supply of Goods to Consumer Regulations 2002, The Consumer Rights Act 2015 or the Sale of Goods and Supply of Services Act 1980 (for ROI).

DECLARATION OF CONFORMANCE

groov-e hereby declares that this product is in compliance with the essential requirements and other relevant provisions of the Radio Equipment Directive 2014/53/EU. The complete declaration of conformity can be requested from us at:

groov»e

Unit J

Braintree Road

Braintree Industrial Estate

Ruislip

Middlesex

HA4 0EJ

www.groov-e.co.uk

Email: info@groov-e.co.uk

Telephone: 020 8839 0978

Authorised EU Representative

Rashmian EU Ltd

Robwyn House

Suite 3E

Corrintra

Castleblayney

Co. Monaghan

Ireland

Register your purchase for extended warranty

www.groov-e.co.uk/warranty